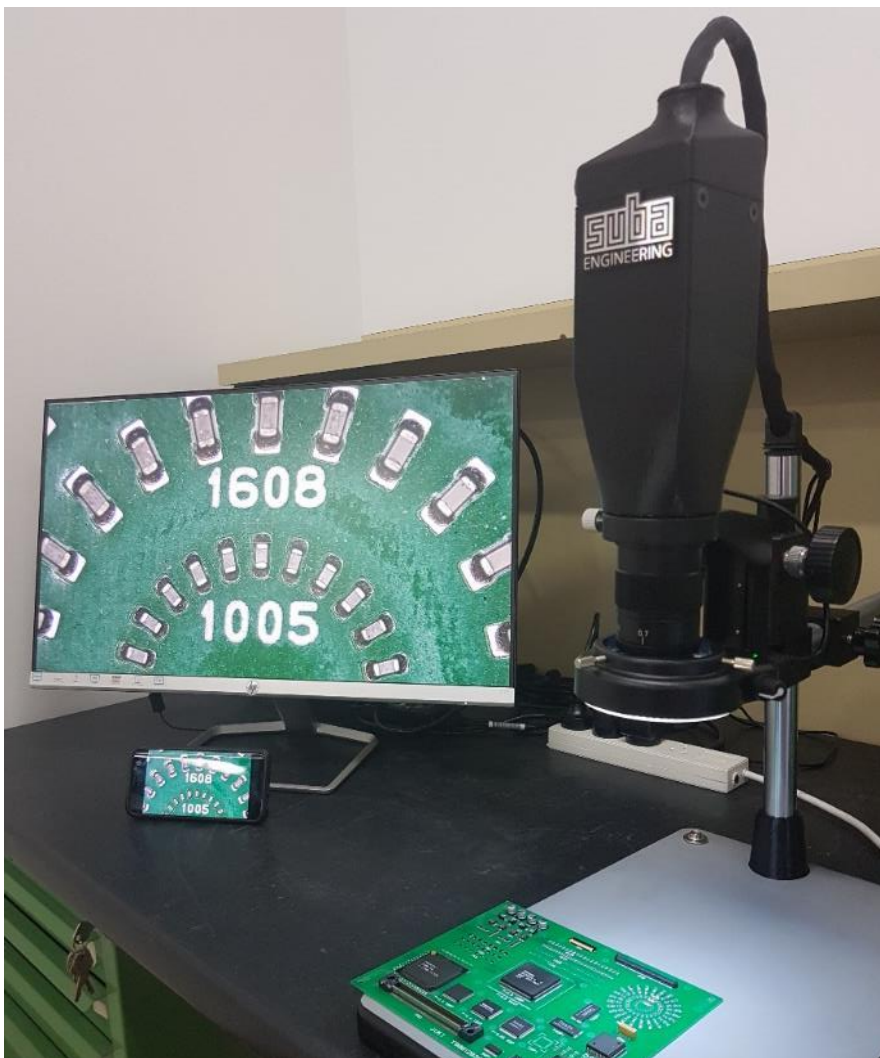


# The new SubaScope 200

- Australian digital microscope model Q1/2019
- Auto-focus feature is standard
- Up to 200x zoom level is standard
- Image and video capturing function is standard
- Micro FlashAir card for Wi-Fi transfer of photos and videos is standard
- Bluetooth mouse is standard
- Adjustable ring light is standard
- Table with adjustable arms is standard
- Dual ruler display on monitor for measurements

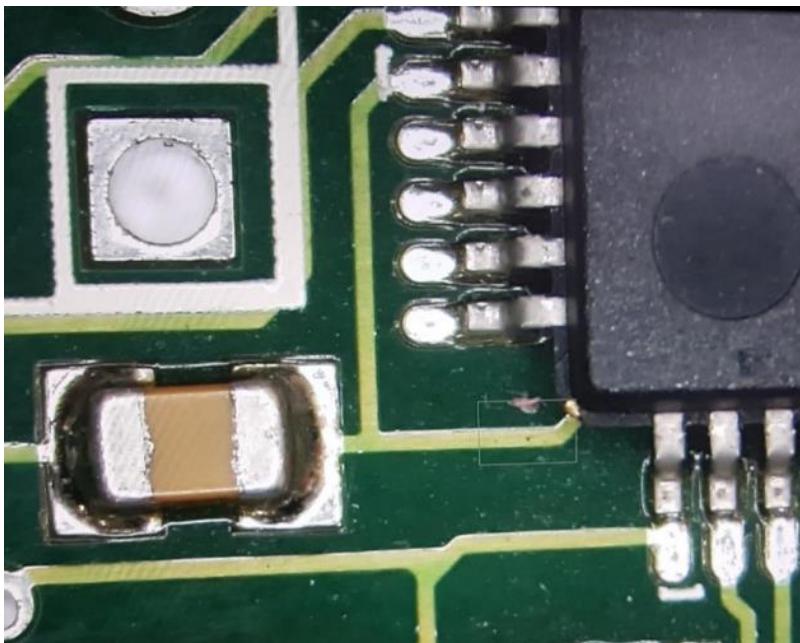


Above Smart phone with the photo transferred via FlashAir Wi-Fi card. No need to remove the card to transfer the photos or videos. A great feature to have

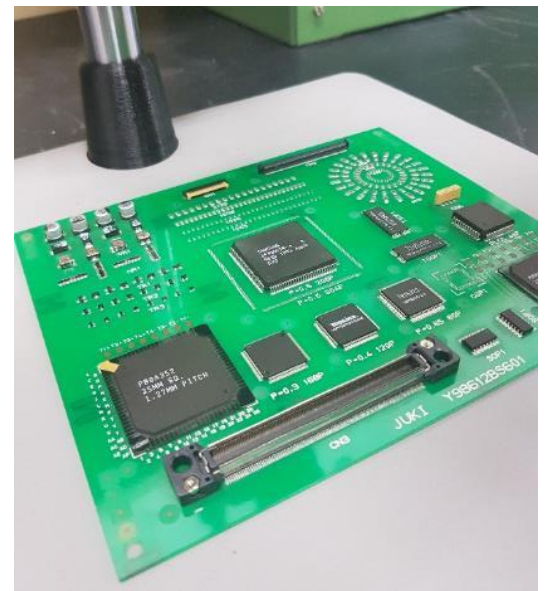
It is again a very special event at Suba Engineering. We finished our new **SubaScope** 200, Q1 2019 model. The advanced version of the well sold 2018 model an "Australian" digital auto-focusing Microscope with a zoom of up to 200x. We use our 3-D printer and CAD software to make the parts and source some hardware from overseas suppliers.

The **SubaScope** 200 model 2019 with FHD automatic focusing, Bluetooth mouse, built in software and Micro FlashAir card to take pictures or videos and transfer them via Wi-Fi to your Smart phone or PC.

## Our technology will be your great advantage



Picture of improved Scope stand



**OUR TECHNOLOGY = YOUR ADVANTAGE**